



Competition Guide

**A Guide to Coordinating a Successful
Truck Driving Competition**



COORDINATING A SUCCESSFUL COMPETITION

Each year, the International Foodservice Distributors Association (IFDA) holds The National Championship which includes a competition for professional truck drivers.

This guidebook is provided for companies interested in holding a division or company truck driving competition.

Why Your Company Should Participate in a Truck Driving Competition

A truck driving competition can be an important tool in your total safety program, promoting driver skills and knowledge and lowering the costs associated with deficient or unsafe practices. This event also provides a powerful incentive for superior performance, establishes a sense of company pride, and offers tangible evidence to your community, your drivers, and your drivers' families that your company has a genuine concern for safety and professional driving conduct in the operation of your fleet.

The competition described in this guide is similar to The IFDA National Championship and contains three parts:

1. **Written Exam:** To measure a driver's knowledge of safety and operating procedures.
2. **Vehicle Inspection:** To "uncover" planted equipment defects and safety hazards and to determine readiness of the vehicle for operation.
3. **Driving Course Obstacles:** A series of obstacles simulating everyday operating conditions.

Help in Coordinating Your Truck Driving Competition

If you have a question relating specifically to the National Championship that are not answered in this guidebook, please contact us at events@ifdaonline.org

General Information for Conducting a Truck Driving Competition

Driver Eligibility for participation in The IFDA National Championship

It is important that all contestants meet minimum requirements for competition. Requirements for The IFDA National Championship are:

1. The competitor must have at least one year of continuous full-time employment as a driver with a food distribution company (e.g., foodservice distributor, foodservice manufacturer with a private

fleet, grocery wholesaler, convenience distributor).

2. The competitor must currently be employed as a full-time driver and not in a supervisory role.
3. The competitor must have an accident-free driving record for the one-year period prior to The IFDA National Championship. "Accident-free" means no at-fault accidents and no alcohol- or drug-related chargeable violations during that time.
4. The competitor must hold a valid Interstate Commercial Driver License (CDL) for the type of truck they will operate during the competition.
5. The competitor must have continuously distinguished himself/herself by embracing a culture of safety and seeking to improve as a professional.
6. The competitor must possess the skills and abilities required to be competitive at The IFDA National Championship.
7. The competitor can only compete in one event at The IFDA National Championship.

All drivers entered in The IFDA National Championship are required to submit certain driver information for the year prior to the competition. To ensure that the driver meets the eligibility requirements, the CEO, Division President, or Vice President of Distribution/Operations must sign a verification letter for each driver.

Personnel Requirements for Holding a Competition

Personnel requirements will vary depending on the driving course selected and the number of judges available. The following allocations are based on previous National Championship requirements:

1. **Lead Judge** – 1 person. This individual conducts the orientation, prepares the judges, designs the driving course, identifies the planted vehicle defects, conducts the driver walkthrough, makes sure things are "on schedule" and is the "go-to" person for any questions or issues that arise.
2. **Written Examination** – 2 to 3 people to create, review and score the exams. Normally, the written exam takes place prior to the driving course and the pre-trip inspection, so the individuals who score the exams can also assist elsewhere.
3. **Pre-Trip Vehicle Inspection** – 1 person per vehicle. Depending on the number of drivers competing, the pre-trip inspection can take place at the same time as the driving course. This can help reduce the overall time of the event.
4. **Driving Course Judges** – 6-12 people. A typical driving course consists of 6 obstacles and 1 to 2 judges per obstacle.
5. **Equipment Hostlers** – 2 people. These individuals position the equipment at the start line and drive the equipment from the stop line to the start line.
6. **Starter** – 1 person. This individual makes sure the drivers' mirrors are positioned properly before signaling the driver to start and activates the stopwatch as the vehicles' front bumper crosses the start line.

7. **Timekeepers** – 2 people. These individuals follow the vehicle as it goes through the driving course, time the competitors time on the course, pick up the score sheets from the judges, and bring the score sheets to the scorekeepers for tabulation.
8. **Scorekeepers** – 2 people. These individuals tally the scores for each driver after they complete their driving course and pre-trip inspection. PLEASE NOTE: The written examination scores are also tallied for each driver to come up with a total score for the three major scoring areas.

The Lead Judge and the Hostlers should be members of your transportation management team. Other judges can be distribution center personnel, department heads, sales personnel, mechanics, members of local law enforcement agencies, state regulatory offices, and local transportation and safety clubs.

Communicate requirements to all officials/judges in advance of the event. Depending on the level of secrecy regarding the driving course, you may elect to not make obstacle-specific information available until the orientation. This is the time for all questions to be asked and answered regarding proper scoring and judging procedures.

Classes of Competition

The types of vehicles most commonly used in food distribution determine the number of vehicle classes and the actual vehicles used at The IFDA National Championship.

At the IFDA National Championship, and there are three (3) classes of competition:

- Straight Truck
- 3-Axle
- 5-Axle

The classes of competition in your event would depend on your operation.

When conducting your competition, it is important that all vehicles in the same class of competition are identically spec'd. For example, if single axle tractors are used on the driving course, each tractor should have the same wheelbase, fifth wheel setting, cab style, etc. This is done to ensure that each driver is tested under conditions identical to those faced by other competitors. No driver should be perceived as having an advantage over another.

Structure of the Competition

As mentioned previously, The IFDA National Championship includes three parts:

- Written Examination
- Pre-Trip Inspection
- Driving Course

Below are key details on the written exam and pre-trip inspection, followed by in-depth instruction of the driving course portion of a successful competition.

Written Examination

The written exam is used to measure the driver's knowledge of job responsibilities and safety practices as set forth in the most recent versions of the JJ Keller Green Book (available at www.jjkeller.com or Amazon.com) and the ATA Facts for Drivers handbook (available from the American Trucking Association at www.atabusinesssolutions.com). You may also want to include questions on rules and procedures specific to your operating area and company.

The written examination at The IFDA National Championship consists of 25 questions (a mixture of true/false and multiple choice) and must be completed within one hour.

Physical arrangements for the written exam should include tables, chairs, pencils, and erasers. An official should explain the rules and periodically announce the time remaining to complete the examination.

Sample Written Examination Questions

During a pre-trip inspection, what is the minimum tread depth required for drive tires?

- a) 2/32 inch
- b) 4/32 inch
- c) 6/32 inch
- d) 8/32 inch

What is the proper procedure for checking trailer doors before departure?

- a) Check that doors are closed and locked only
- b) Inspect door seals, hinges, latches, and ensure proper closure
- c) Verify doors open and close without checking locks
- d) Only check if doors are visibly damaged

At what speed should a driver leave 4 seconds of following distance in ideal conditions?

- a) 35 mph

- b) 45 mph
- c) 55 mph
- d) 65 mph

Which BASIC category in the CSA program focuses on unsafe driving behaviors?

- a) Vehicle Maintenance
- b) Unsafe Driving
- c) Driver Fitness
- d) Controlled Substances/Alcohol

In case of a vehicle fire, what should be your first priority?

- a) Attempt to extinguish the fire
- b) Move the vehicle to safety
- c) Get yourself and others to safety
- d) Call for emergency assistance

Pre-Trip Vehicle Inspection

The pre-trip inspection tests the driver's ability to conduct an efficient and thorough safety check of the vehicle. The driver is scored on the number of "planted" safety-related defects he/she finds within a specified period of time (five minutes for Straight Truck and seven minutes for 3-Axle and 5-Axle). One back-track is allowed without penalty.

At The IFDA National Championship, five (5) defects are planted. The total score is 100 points (20 points per defect).

The vehicles used for the pre-trip inspection portion of the competition should be the same type as, but not necessarily identical to, the vehicles being used on the driving course. Ideally, a driver competing in the 3-axle class should inspect a 3-axle vehicle; however, if a single axle trailer is not available, a tandem axle trailer can be substituted, or if a Navistar tractor is not available, a Freightliner or other model could be used.

Depending on the number of drivers competing, it may speed things up in the pre-trip inspection to have more than one vehicle per class, i.e., two straight trucks, two 3-axle, etc.

Examples of "Planted" Defects:

Planted defects can include items such as inoperative lights, missing or inoperative windshield wipers, missing wheel lugs, and similar defects not requiring a high degree of mechanical adjustment. A score sheet is provided in the APPENDIX of this guidebook and is an example of that used at The IFDA National Championship. It can be adapted for your use.

Scoring and Operating Procedures for the Driving Course

Orientation of Judges/Officials

It is essential that officials be briefed in advance of the driving competition on their duties and on the procedures for scoring their assigned obstacle or event in the competition. This can be done by using a diagram of the driving course displayed in a PowerPoint presentation or as a handout. The briefing should include the path of the contestant through the driving course with an emphasis on what the judges can expect to see in the way of proper and/or improper actions, along with an explanation of the correct scoring procedures.

The jurisdiction of a driving course judge over his/her assigned obstacle begins at the time the contestant completes the preceding obstacle on the course and ends when the contestant has cleared the obstacle being scored and has gone on to the next obstacle. On the first obstacle, the jurisdiction of the judge begins when the driver crosses the starting line. The driving course judge should be acquainted with:

- The general instructions governing the actions of contestants on the course.
- The sequence of obstacles on the driving course.
- The correct operating and scoring procedure for their assigned obstacle.

Orientation of Drivers

At The IFDA National Championship, the driver orientation occurs the evening prior to the driving course and pre-trip inspection events. This orientation is followed by the written examination. By doing this, the scores for the written exams can be tallied without slowing down scorekeeping for the next day's events. An actual competitor walk-through on the driving course takes place just before that event begins.

Prior to the start of the driving course competition, contestants must be briefed by a walkthrough of the driving course, an explanation of proper operating and scoring procedures given on each course obstacle, and an explanation of obstacle sequence. All driving course judges/officials should be at their assigned obstacle during the walkthrough. Any questions regarding a particular obstacle should be addressed during the walkthrough.

Sequestering Area

A waiting or sequestering area for contestants should be designated. Contestants are required to remain in this area until their class of competition is completed. Competitors are not permitted to leave the sequestering area until they are done with the pre-trip and competition course. Cell phone use is prohibited until a driver has completed the driving course and the pre-trip inspection events. Sequestering is designed to remove the potential for one driver gaining an unfair advantage over another.

General Rules for the Driving Course

Driver Position

“Proper driving position” for the purpose of this event means that the contestant remains seated at all times (“cheeks on the seat”) while driving. The seat belt must be worn in its normal position.

Measurements, Signals, and Other issues

- Tire measurements will be taken from the side of the tire and not the tread.
- The vehicle must be kept within the established boundaries of the overall course and specific obstacles.
- To signal a judge to take a measurement, drivers make two short horn blasts. Once the measurement has been taken, the driver proceeds only after being signaled by the official.
- Judges will signal drivers when it is okay to proceed to the next obstacle by either a hand signal or a whistle. If a whistle signal is used, it should be two short whistle blasts.
- If a driver experiences a serious mechanical problem while on the driving course, an “emergency time out” can be signaled by three long horn blasts.
- Each obstacle on the driving course is worth 50 points. The driver’s goal is to get as close as possible without hitting any course equipment positioned for scoring.

Driving Course Obstacle Descriptions

(6 obstacles, 50 points each, 300 Total Points)

The driving course at The IFDA National Championship is designed to move drivers through the course as efficiently as possible.

General Supplies Required

The following items may be needed for the efficient administration of your competition:

- Cones (orange or a color that is highly visible)
- Barricade(s)
- Colored tape
- Stop watches (2 for the starter and 1 for each pre-trip judge)
- Calculators (one for each scorekeeper)
- Chalk to mark the course during set-up
- 100-foot measuring tape to set up the driving course
- Tennis balls (bright color for visibility) and pre-cut rubber hose and string
- Clipboards (1 for each Judge)
- Whistles (1 for each judge)

Typical Driving Course Score Sheets

A “Pre-Trip Inspection” Score Sheet, “Timekeeper’s Score Sheet,” and score sheets for each of the following course problems is available in the APPENDIX of this publication.

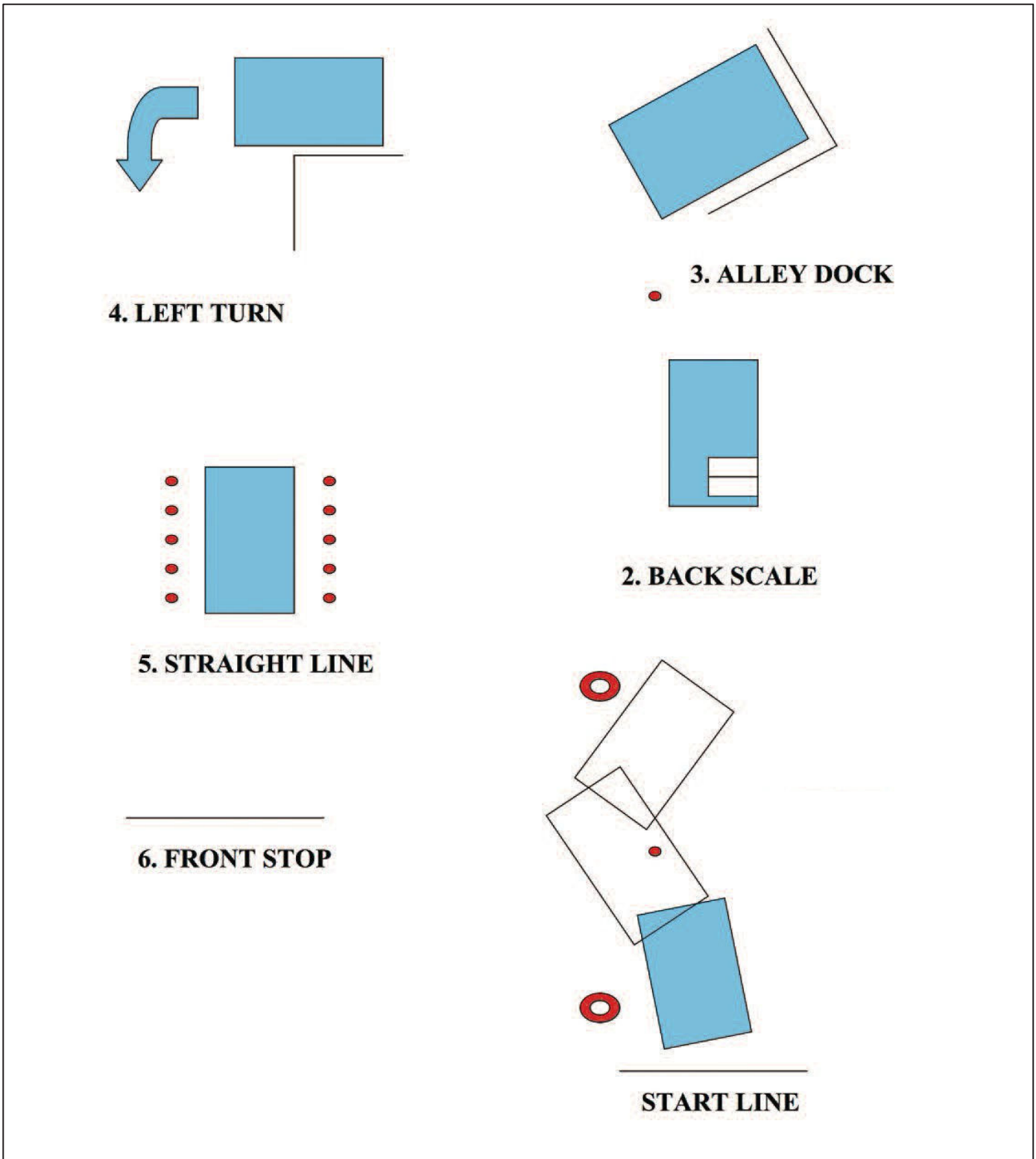
Driving Course Obstacle Examples

The following obstacles are taken from a previous IFDA National Championship course. Please note that the driver course obstacles at The IFDA National Championship change every year

- Funky-Monkey
- Curb Stop
- Alley Dock
- Left Turn
- Straight Line
- Front Stop

The following pages include a sample course layout with the above driving course obstacles, and descriptions of each course obstacle.

Sample Driving Course - Overall Diagram



Sample Driving Course - Start to Finish in Pictures



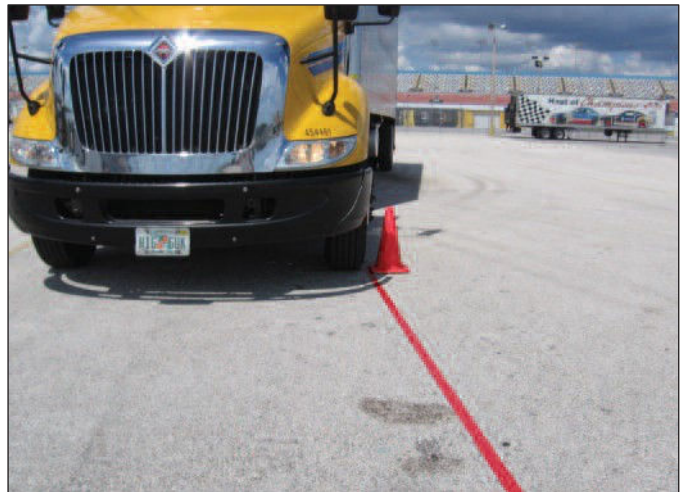
1. Start Line



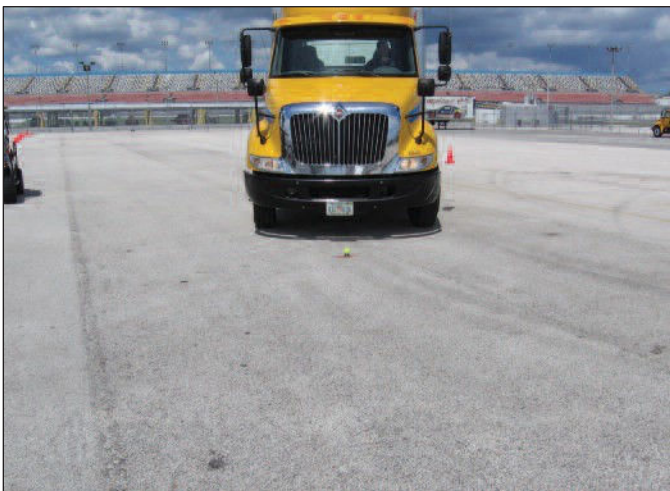
2. View of FUNKY MONKEY as you approach the obstacle.



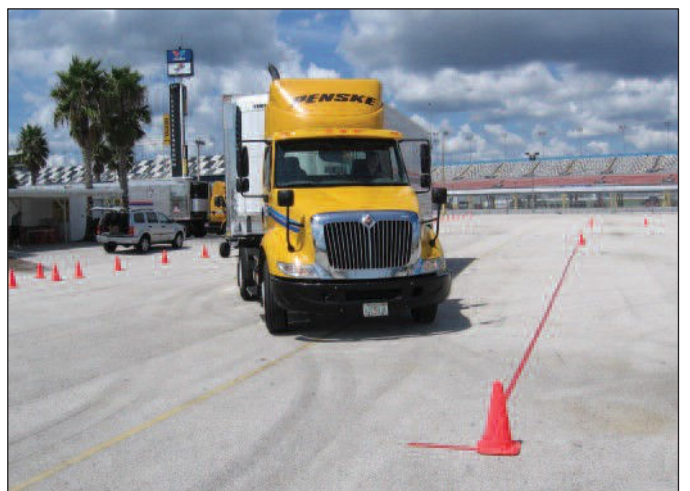
3. FUNKY MONKEY first cone. Note points marked on tape.



4. FUNKY MONKEY as driver passes first cone.



5. FUNKY MONKEY as driver navigates over ball.



6. FUNKY MONKEY as driver navigates toward second cone.

Sample Driving Course - Start to Finish in Pictures



7. *CURB STOP* obstacle consists of a 65-foot line simulating a right-side curb with a 3-foot by 3-foot box at the beginning of the curb as you approach.



8. *CURB STOP* - Note points indicated in bands.



9. *CURB STOP* - The objective is to stop the vehicle for measurement when the rear of the van or trailer is within that box.



10. View from *CURB STOP* challenge toward *ALLEY DOCK* obstacle.



11. View of simulated ALLEY DOCK.



12. ALLEY DOCK challenge from judges area.

Sample Driving Course - Start to Finish in Pictures



13. ALLEY DOCK challenge. The driver's goal is to get as close as possible to the barricade without touching.



14. View from ALLEY DOCK challenge toward LEFT TURN challenge.



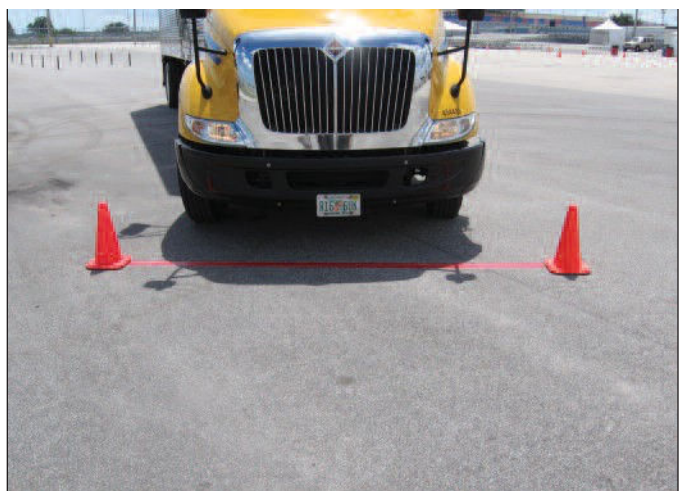
15. LEFT TURN obstacle. Note measurements marked on tape. ALLEY DOCK challenge. The driver's goal is to get as close as



16. LEFT TURN as driver gets left rear tire as close as possible to the 90-degree corner without hitting.



17. View approaching the STRAIGHT LINE problem.



18. The FRONT STOP concludes the driving course.

Funky Monkey

This “continuous motion” obstacle consists of 2 cones 75 feet apart with a tennis ball halfway between the cones. The tennis ball is 25 feet off-center. There is a boundary line to the left. The objective is to keep the cones to the driver’s left and position the left front tire within 18 inches of each cone as he/she drives by, without going over the boundary line. To score for this event, the contestant must straddle the tennis ball with the steering axle and must not knock the tennis ball off its holder. If the contestant knocks the tennis ball off its holder, he/she will receive NO SCORE. Each cone is worth 25 points (0” to 9” = 25 points; 9” to 18” = 10 points; and over 18” = 0 points). If the driver scores on Cone 1, straddles the tennis ball with the steering axle and does not knock the tennis ball off its holder, but does not score on Cone 2, then the total score for this problem will equal the points earned by the measurement on Cone 1. If the driver crosses the boundary line, he/she gets NO SCORE. The driver does not stop or signal for a measurement for this problem.

Equipment Needed: 2 cones, 1 tennis ball (make sure you have replacements), a holder for the tennis ball (a 2-inch-wide piece of rubber hose, cut 2 inches high works fine), and colored tape to simulate the boundaries (yellow or red is most visible). See APPENDIX for a score sheet.



Funky Monkey - 1



Funky Monkey - 2



Funky Monkey - 3



Funky Monkey – 4

Curb Stop

This “continuous motion” problem consists of a 65-foot line simulating a right-side curb with a 3-foot by 3-foot box at the beginning of the curb as you approach. The objective is to stop the vehicle for measurement when the rear of the van or trailer is within that box. If the rear of the van or trailer is not within the box, the driver will receive NO SCORE. Once the driver signals for a measurement, he/she will be scored on the distance between the side of the van or trailer and the curb. Two measurements will be taken—one from the right front of the van or trailer and one from the right rear. The score will be based on the measurement that is farthest from the curb (0” to 6” = 50 points; 6” to 9” = 45 points; 9” to 12” = 40 points; 12” to 15” = 35 points; 15” to 18” = 30 points; over 18” = 0 points). If any part of the vehicle touches or is over the curb line = NO SCORE. The driver must stop and signal for a measurement for this obstacle.

Equipment Needed: Colored tape (yellow or red is most visible) to simulate the curb and to create the box. Please see AP-PENDIX for a score sheet.



Curb Stop 1 (approaching)



Curb Stop 2 (stopped for measurement)

Alley Dock

This obstacle is 10 foot wide and 10 foot deep. The objective is to back into the loading dock and position the rear of the van or trailer as close as possible to the rear barricade without hitting it or crossing over a sideline. Measurement is taken from the rear of the van or trailer to the rear barricade (0” to 6” = 50 points; 6” to 9” = 45 points; 9” to 12” = 40 points; 12” to 15” = 35 points; 15” to 18” = 30 points; over 18” = 0 points). No part of the vehicle can pass over a sideline. One free pull-up is allowed without penalty. The driver is allowed to stop as many times as he/she wishes without penalty while backing up. The driver must stop and signal for a measurement for this problem.

Equipment Needed: Colored tape (yellow or red is most visible) to simulate the sides and back, and a barricade for the back (positioned above the taped back line). The barricade can be made with PVC pipe or wood; it should be 10 foot wide and 4 foot 4 inches high. Material needed includes 2 vertical side rails (4'4" high), 2 horizontal rails (10' long) and 2 barricade "feet" to prevent it from falling over (should extend backward (away from the scoring side) 2 foot 6 inches). See APPENDIX for a score sheet.



Alley Dock 1 (getting into position to back up)



Alley Dock 2 (stopped for measurement)

Left Turn

This is a "continuous motion" obstacle. The objective is for the driver to get the left rear tires as close as possible to the 90-degree corner without hitting it. The score is based on the measurement from the corner to the closest tire as it passes the point of the turn (0" to 6" = 50 points; 6" to 9" = 45 points; 9" to 12" = 40 points; 12" to 15" = 35 points; 15" to 18" = 30 points; over 18" = 0 points). The driver must not stop or signal for a measurement for this obstacle.

Equipment Needed: 1 barrel or very large cone; colored tape (yellow or red) to create the 90-degree angle and the diagonal measuring line from the corner point. See APPENDIX for a score sheet.



Left Turn 1 (approaching)



Left Turn 2 (coming through left turn problem, which then approaches straight line obstacle)

Straight Line

This is a “continuous motion” obstacle. The objective is to pass between two rows of tennis balls (5 balls each side) with-out hitting any of the balls. The balls should be positioned with only 2 inches of clearance for a set of tandems as they pass through the line. The driver receives 5 points off for each tennis ball he/she hits. The driver must not stop or signal for a measurement for this obstacle.

Equipment Needed: 10 tennis balls (be sure to have replacements) and 10 holders. Rather than stanchions as shown, rest balls on pieces of 2-inch diameter rubber hose, cut 2 inches high. Attach each tennis ball to a holder, with a strong 12-inch string, so you will not be chasing tennis balls all over the course if hit. See APPENDIX for a score sheet.



Straight Line (approaching)



Straight Line (driving through)

Front Stop

This “continuous motion” obstacle consists of a 15-foot line. The objective is to position the front bumper of the vehicle as close to the stop line as possible without going over it. Measurement is taken from the center of the front bumper to the stop line (0” to 6” = 50 points; 6” to 9” = 45 points; 9” to 12” = 40 points; 12” to 15” = 35 points; 15” to 18” = 30 points; over 18” = 0 points). The driver must stop and signal for a measurement for this obstacle.

Equipment Needed: colored tape (yellow or red) to mark the 15-foot stop line; 2 cones (one at each end of the stop line). See APPENDIX for a score sheet.



Front Stop 1 (approaching)



Front Stop 2 (Stopped for measurement)

APPENDIX

Typical Driving Course Score Sheets

The following are score sheets taken from a previous IFDA National Championship

1. Pre-Trip Inspection
2. Timekeeper's Score Sheet
3. Funky-Monkey
4. Curb Stop
5. Alley Dock
6. Left Turn
7. Straight Line
8. Front Stop

Judge's Score Sheet PRE-TRIP INSPECTION

Contestant's Number: _____

Event Value: 100

*Time Limits: 5 minutes for Straight Truck, 7 minutes for Tractor/Trailer



**Planted
Defects
Found:**

0 0 points	1 20 points	2 40 points
3 60 points	4 80 points	5 100 points

**Significant Unplanted
Defects Found:
2 additional points**

1 2 pts	2 4 pts	3 6 pts	4 8 pts	5 10 pts
-------------------	-------------------	-------------------	-------------------	--------------------

Describe Unplanted Defects Found: _____

Total Points for Defects Found _____



**Point
Deductions**

One Backtrack (0) _____
 Two Backtracks (40) _____
 Three or more Backtracks (100) _____

Total Point Deductions

40	100
-----------	------------



TOTAL SCORE (Planted plus Unplanted minus Point Deductions) _____

Incomplete Problem

Judges' Signatures _____

Judge's Score Sheet FUNKY MONKEY

Contestant's Number: _____

Event Value: 50 Points

	Cone # 1		Cone # 2
Position Score	0" - 9" 25 points		0" - 9" 25 points
	9" - 18" 10 points		9" - 18" 10 points
	Over 18" 0 points		Over 18" 0 points

Total Position Points

0	10	20	25	35	50
----------	-----------	-----------	-----------	-----------	-----------

Point Deductions

- Improper Driving Position (25) _____
- Door Open – Fwd Position (25) _____
- Ignoring Stop Signal (25) _____
- Stopped (50) _____
- Backed Up (50) _____
- Out of Bounds (50) _____
- Knock off Tennis Ball (50) _____
- Striking either Cone (50) _____
- No Straddle Ball w/Steering Axle (50) _____

Total Point Deductions

25	50
-----------	-----------

TOTAL SCORE (Position Score minus Points Deductions) _____

Incomplete Problem

Judges' Signatures _____

Judge's Score Sheet CURB STOP

Contestant's Number: _____

Event Value: **50**

**Position
Score**

0" – 6" 50 points	6" – 9" 45 points	9" – 12" 40 points
12" – 15" 35 points	15" – 18" 30 points	Over 18" or Hit Measuring Point No Score

**Point
Deductions**

No Measurement Honk	(5)	_____
Improper Driving Position	(25)	_____
Door Open – Forward Position	(25)	_____
Ignoring Stop Signal	(25)	_____
Not Waiting – Proceed Signal	(25)	_____
On or Over the Curb Line	(50)	_____
Not Waiting – Measurement	(50)	_____
Outside of Measurement Zone	(50)	_____
Rear of Trailer Not in Box	(50)	_____

Total Point Deductions

5	25	30	50
----------	-----------	-----------	-----------

TOTAL SCORE (Position Score minus Point Deductions) _____

Incomplete Problem

Judges' Signatures _____

Judge's Score Sheet ALLEY DOCK

Contestant's Number: _____

Event Value: 50

**Position
Score**

0" – 6" 50 points	6" – 9" 45 points	9" – 12" 40 points
12" – 15" 35 points	15" – 18" 30 points	Over 18" or Hit Measuring Point No Score

**Point
Deductions**

- No Measurement Honk (5) _____
- Extra Pull-Ups (1 allowed) (5 ea.) _____
- Improper Driving Position (25) _____
- Door Open – Fwd Position (25) _____
- Ignoring Stop Signal (25) _____
- Not Waiting /Proceed Signal (25) _____
- Not Waiting/Measurement (50) _____
- Striking Rear Barricade (50) _____
- Failure to Stop/Realign (50) _____
- Out of Measurement Zone (50) _____
- Bumper Over the Line (50) _____
- Out of Bounds / Hit Fixture (50) _____

Total Point Deductions

5	10	15	20	25	30	35	40	45	50
---	----	----	----	----	----	----	----	----	----

TOTAL SCORE (Position Score minus Point Deductions) _____

Incomplete Problem

Judges' Signatures _____

Judge's Score Sheet LEFT TURN

Contestant's Number: _____

Event Value: 50

Position Score	0" – 6" 50 points	6" – 9" 45 points	9" – 12" 40 points
	12" – 15" 35 points	15" – 18" 30 points	Over 18" or Hit Measuring Point - No Score

	Improper Driving Position	(25) _____
	Door Open – Fwd Position	(25) _____
	Ignoring Stop Signal	(25) _____
Point Deductions	Goes out of bounds	(50) _____
	Stopped	(50) _____
	Backed Up	(50) _____
	Outside of Measurement Zone	(50) _____
	Struck Corner or Cone	(50) _____

Total Points Deducted

5	10	15	20	25	30	35	40	45	50
----------	-----------	-----------	-----------	-----------	-----------	-----------	-----------	-----------	-----------

TOTAL SCORE (Position Score minus Point Deductions) _____

Incomplete Problem

Judges' Signatures _____

**Judge's Score Sheet
STRAIGHT LINE**

Contestant's Number: _____

Event Value: 50



**Position
Score**

Number of Balls Not Hit _____ x 5 points each = _____



Point Deductions

Improper Driving Position (25) _____
Door Open – Fwd Position (25) _____
Ignoring Stop Signal (25) _____
Stopped (50) _____
Backed Up (50) _____
Out of Bounds (50) _____

Total Point Deductions

25	50
-----------	-----------



TOTAL SCORE (Position Score minus Points Deductions) _____

Incomplete Problem

Judges' Signatures _____

Judge's Score Sheet FRONT STOP

Contestant's Number: _____

Event Value: 50

**Position
Score**

0" – 6" 50 points	6" – 9" 45 points	9" – 12" 40 points
12" – 15" 35 points	15" – 18" 30 points	Over 18" or Hit Measuring Point No Score

**Point
Deductions**

No Measurement Honk	(5) _____
Improper Driving Position	(25) _____
Door Open – Fwd Position	(25) _____
Ignoring Stop Signal	(25) _____
Stopped	(50) _____
Backed Up	(50) _____
Out of Bounds	(50) _____
Out of Measurement Zone	(50) _____
Over the Line	(50) _____

Total Point Deductions

5	25	30	50
----------	-----------	-----------	-----------

TOTAL SCORE (Position Score minus Point Deductions) _____

Incomplete Problem

Judges' Signatures _____